





**CULTURAL PROPERTIES NEAR THE MAYON VOLCANO  
6-KM PERMANENT DANGER ZONE, 7-KM AND 8-KM EXTENDED DANGER ZONE**

**I. PROPERTIES AND HAZARDS ASSOCIATED**

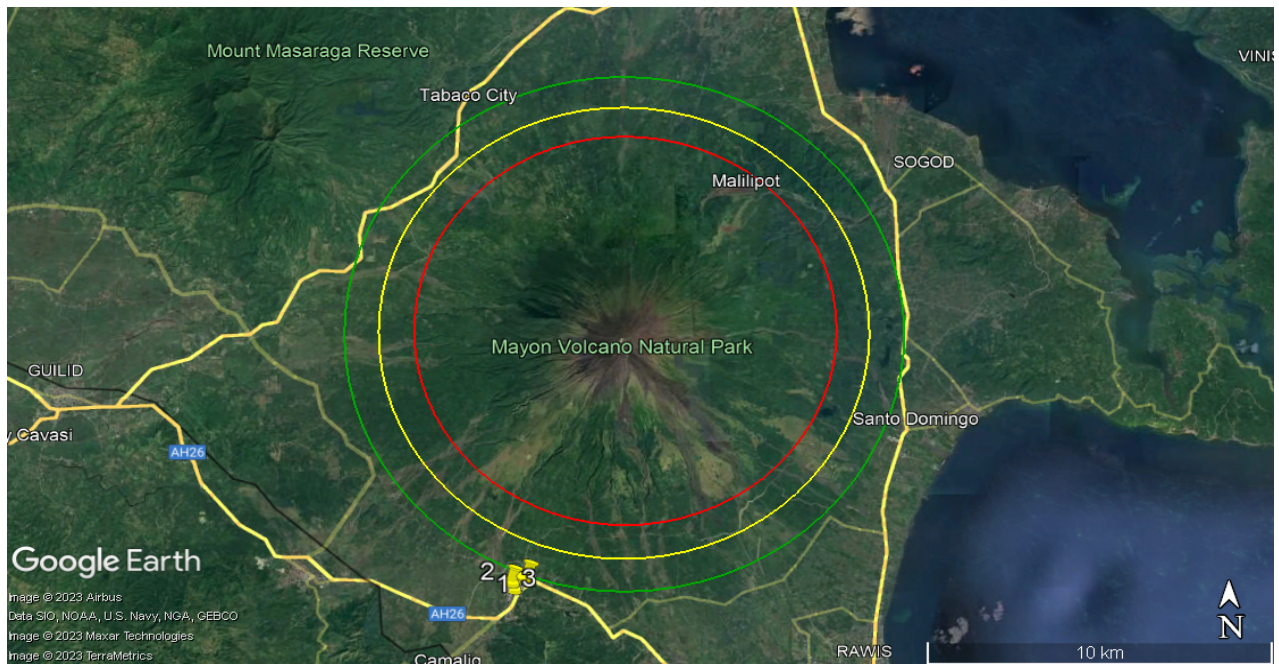
Cultural Properties		Geographic Coordinates	Municipality	Distance from the 8-km EDZ	Province	Hazards
1	Camalig North Central School (Gabaldon Building)	13.18556, 123.65831	Camalig	Approximately 400 m	Albay	<ul style="list-style-type: none"> <li>• Ground Shaking – Prone</li> <li>• Lahar – Prone (Low)</li> <li>• Ashfall – Prone</li> <li>• Rain-induced Landslide – Moderate Susceptibility ; Possible Landslide Occurrence</li> </ul>
2	Roman Catholic Cemetery Arc	13.18414, 123.65415	Malilipot	Approximately 670 m	Albay	<ul style="list-style-type: none"> <li>• Ground Shaking – Prone</li> <li>• Lahar – Prone (Moderate)</li> <li>• Ashfall – Prone</li> <li>• Flood (MGB) -Low Susceptibility ; less than 0.5 meters flood height and/or less than 1 day flooding</li> </ul>

3	Parish Church of Saint John the Baptist of Camalig   Simbahan ng Camalig Marker	13.1823, 123.65475	Camalig	Approximately 870 m	Albay	<ul style="list-style-type: none"> <li>• Ground Shaking – Prone</li> <li>• Lahar – Prone (Moderate)</li> <li>• Ashfall – Prone</li> <li>• Flood (MGB) - Low Susceptibility ; less than 0.5 meters flood height and/or less than 1 day flooding</li> </ul>
---	---	--------------------	---------	---------------------	-------	---

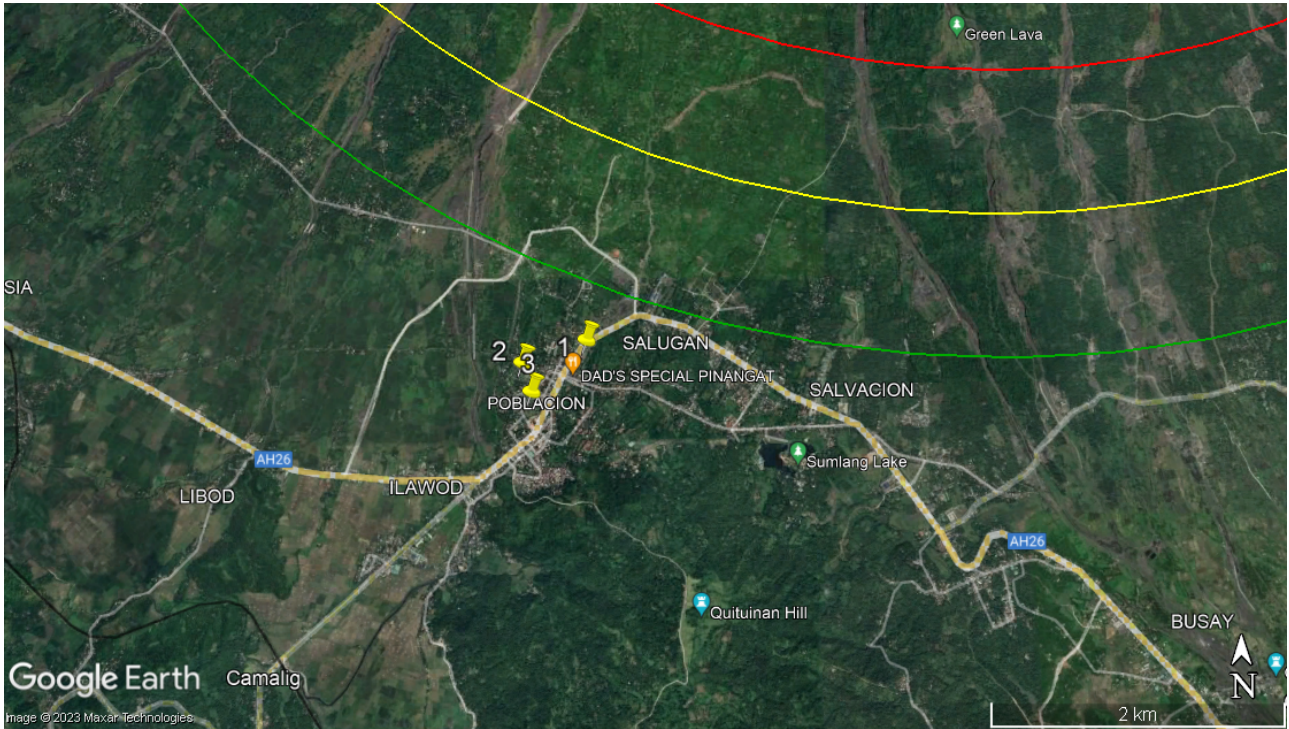
## II. MAP

<b>LEGEND:</b>	
   	<p>Mt. Mayon 6-KM Radius</p> <p>Mt. Mayon 7-KM Radius</p> <p>Mt. Mayon 8-KM Radius</p> <p>Cultural Properties</p>

The kilometer radii used for the report is based on the volcanic alert levels set by PHIVOLCS specific to Mt. Mayon. (<https://www.phivolcs.dost.gov.ph/index.php/volcano-hazard/volcano-alert-level>)







### III. SUMMARY

Near Mt. Mayon 6-km Radius Zone	Near Mt. Mayon 7-km Radius Zone	Near Mt. Mayon 8-km Radius Zone
-	-	1. Camalig North Central School (Gabaldon Building)
-	-	2. Roman Catholic Cemetery Arc
-	-	3. Parish Church of Saint John the Baptist of Camalig   Simbahan ng Camalig Marker

#### References:

Philippine Institute of Volcanology and Seismology 2023, *HazardHunterPH*, accessed 09 May 2023, <<https://hazardhunter.georisk.gov.ph/>>

Google Earth Pro, (2023) *Mt. Mayon 13°15'27"N, 123°41'05"E, elevation 2247M*. Available at: [https://earth.google.com/web/@13.24859906,123.69091484,1783.65650264a,2895.56599193d,35y,36.71841h,69.67512915t,0.00000003r?utm\\_source=earth7&utm\\_campaign=vine&hl=en](https://earth.google.com/web/@13.24859906,123.69091484,1783.65650264a,2895.56599193d,35y,36.71841h,69.67512915t,0.00000003r?utm_source=earth7&utm_campaign=vine&hl=en) [Accessed 09 May 2023].

Google Earth Pro, (2023) *Mt. Mayon 13°11'06"N, 123°39'27"E, elevation 150M*. Available at: [https://earth.google.com/web/@13.19280959,123.66483402,341.82626987a,6931.98534216d,35y,0.25741291h,11.06785422t,359.9918r?utm\\_source=earth7&utm\\_campaign=vine&hl=en](https://earth.google.com/web/@13.19280959,123.66483402,341.82626987a,6931.98534216d,35y,0.25741291h,11.06785422t,359.9918r?utm_source=earth7&utm_campaign=vine&hl=en) [Accessed 09 May 2023].

Google Earth Pro, (2023) *Mt. Mayon 13°11'02"N, 122°39'23"E, elevation 141M*. Available at: [https://earth.google.com/web/@13.18468701,123.65569825,142.25903716a,1312.90457219d,35y,0.94060722h,8.59406398t,359.98659745r?utm\\_source=earth7&utm\\_campaign=vine&hl=en](https://earth.google.com/web/@13.18468701,123.65569825,142.25903716a,1312.90457219d,35y,0.94060722h,8.59406398t,359.98659745r?utm_source=earth7&utm_campaign=vine&hl=en) [Accessed 09 May 2023].